

I WATCHED SOMEONE DIE ON TIK TOK



Date of Show

Thursday 17th October, 7:30pm - 8:30pm

Duration

60 minutes + Introduction, approximately 63 minutes

Location

La Mama HQ
205 Faraday St
Carlton VIC 3053

CONTENTS PAGE

- PAGE 1-

Title Page

- PAGE 2 -

Contents Page

- PAGE 3 -

What to expect from this low sensory performance

- PAGE 5 -

Getting to and around the the Venue

- Page 9 -

The Stage

- Page 10 -

The Performer

- Page 11 -

Content Advice & Feedback

What to expect from this low sensory performance

Feature	What this Entails	Included	Additional Comments
Consultation with a member of the neurodivergent arts community	A member of the arts community who identifies as neurodivergent has been consulted to assess the work and provide feedback on any necessary changes for it to be considered a Low Sensory experience. This person must have experience in low sensory performance practice; they may be internal or external to the team.	Yes	Consultation with Brand X Access Coordinator Dean Nash
Low sensory translation of the performance lighting	The lighting for the show is augmented to be a low sensory version of a standard showing. It is encouraged that the original experience of the show is preserved through these changes.	Yes	Thursday 17th October, 7:30pm
Low sensory translation of the performance Sound	The sound for the show is augmented to be a low sensory version of a standard showing. It is encouraged that the original experience of the show is preserved through these changes.	Yes	Thursday 17th October, 7:30pm
Addition of the house lights at a low level	The house lights are left on at an “airplane at night-time” level. The exact level should be agreed upon by the creative team and consultant.	Yes	Thursday 17th October, 7:30pm
Open door policy	No lock out, people can come and go as they please.	Yes	Full Season
Walkaround policy	People can rock, stim, hum, pace, change seats, and come/go as they need/please.	Yes	Full Season

Open phone policy	Audiences can use support devices during the performance. Recording is discouraged.	Yes	Full Season
Event facilitation by a member of the neurodivergent arts community	The performance day in question is overseen by an arts professional with lived experience of, and connection with, the neurodivergent community. They will oversee the process, giving FOH staff a briefing, introducing the show to the audience, and being on hand to assist with any incidents related to sensory overwhelm.	Yes	Myf Powell / La mama Development and Pathways Manager
Confirmed available Quiet Room	A quiet room is available for patrons to use at their discretion. This room shall be set up in line with advice from a neurodivergent consultant.	Yes	Full Season
Extra FOH staff for the event day	1-2 extra staff should be included to help deliver this specific performance. Staff who have training and/or experience with neurodiversity preferred.	Yes	Gemma Horbury / Ticketing and FOH Supervisor Thursday 17th October, 7:30pm
Capped tickets	75-85% of total seats available, to be agreed upon between the consultant and the creative team.	No	

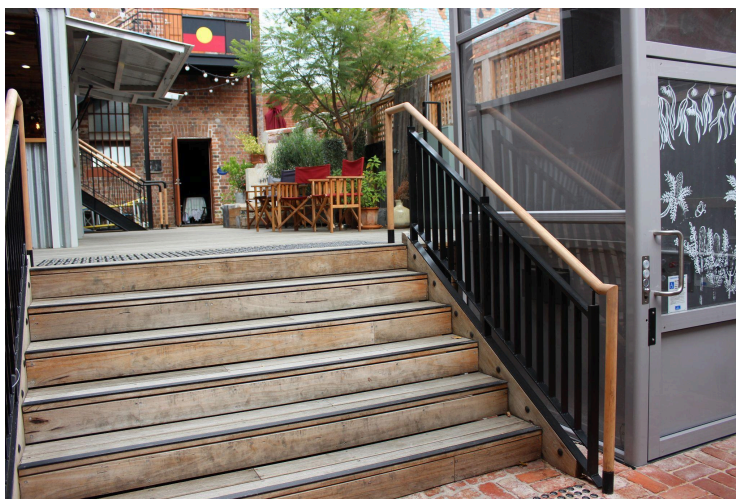
Getting to and around the Venue

Getting to La Mama HQ

La Mama HQ is located at [205 Faraday Street, Carlton](#), set back from the street and nestled between Grill'd and Shakahari restaurants. Pass to the right of this grey brick building to enter.



The entrance to the courtyard is through this door. It will be open like this when the audience is able to access the venue for the show. If it is closed please wait until a member of the front of house team opens the door.



Once you have entered you can take either the stairs or the lift up to the courtyard.

[Images Credit: Artemis Munoz]



To operate the lift, hold the directional arrows to make sure it's at floor level before stepping in.

Then when inside hold the arrows down until the lift stops moving



You can then exit by pushing the door outwards



To the direct left of the entrance staircase and lift, there is a little orange and grey alcove. Through there, you will reach the door to the quiet space. Feel free to come and go or adapt the space to your sensory needs as much as you like.

[Images Credit: Artemis Munoz]



Back in the courtyard you can also access the bar. Here you can speak to La Mama staff about the show, access the program, get your name ticked off the list and get snacks or drinks.



To the right of the bar, near the large staircase to the offices above, you'll find the toilets. All genders are welcome to use either toilet but the one on the left, nearest to the bar is the accessible bathroom.



[Images Credit: Artemis Munoz]

Accessibility

The theatre is wheelchair accessible for audiences. The doorway to the theatre is approximately 1 metre wide. If you are a wheelchair user with a mobility device wider than this please get in touch with myf@lamama.com.au or (03) 9347 6948 so that La Mama can try to meet your access requirements in the most comfortable way for you.

Public Transport

Trams

1 & 6 Stop #112 Lygon St / Elgin St. Walk east along Elgin St, right onto Lygon St, and left onto Faraday St. La Mama will be on your right (5 mins)

1, 3/3a, 5, 6, 16, 64, 67, 72 Stop #1 Melbourne University / Swanston St Walk east along Faraday. La Mama will be on your right. (5 mins)

Buses

200, 207 Lygon St / Elgin St Walk East on Faraday St. La Mama will be on your right (2 mins)

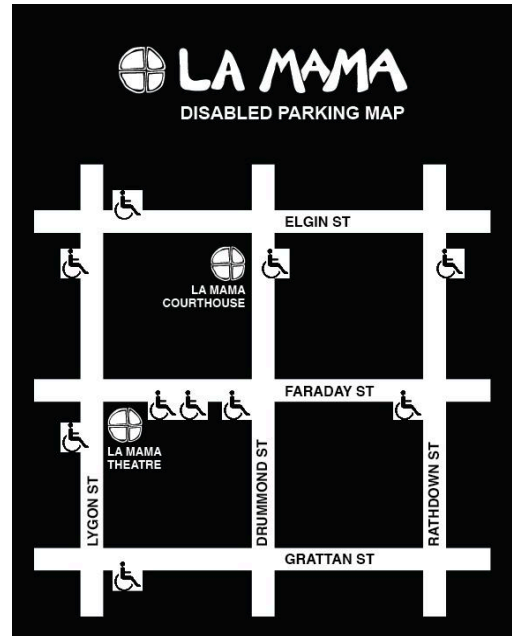
250, 251 Elgin St / Rathdowne St Walk South along Rathdowne St and turn right on to Faraday St, it will be on your right (5 mins)

Train

Melbourne Central Station, followed by a tram or bus ride above.

Box Office

box office opens from 4pm on show days, 2pm on Sunday show days.



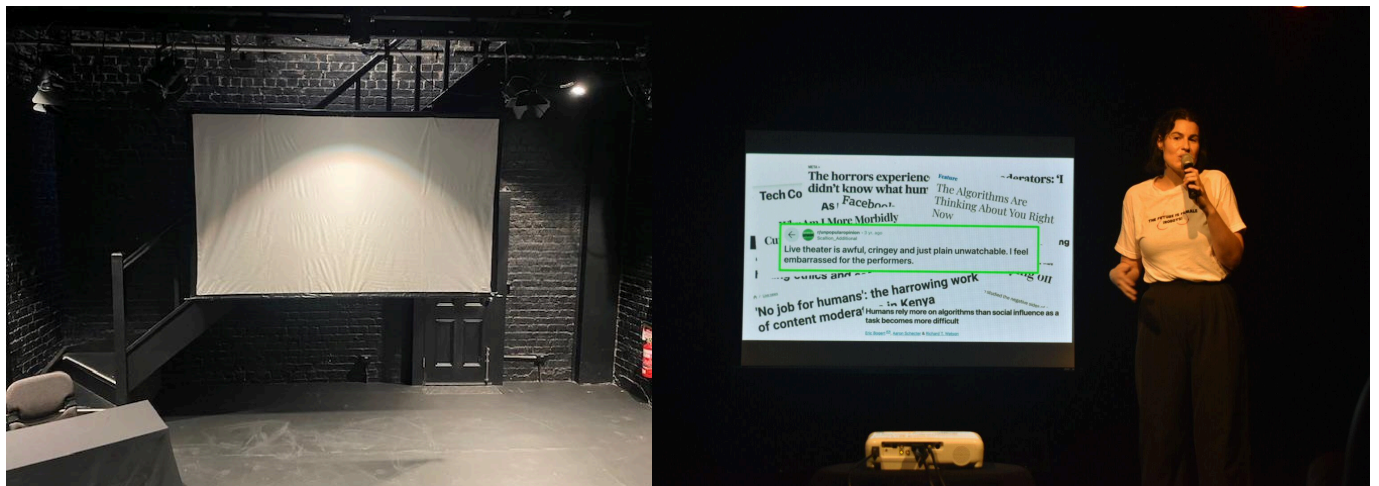
The Stage

I Watched Someone Die on TikTok has a 'standard' configuration of seating.



To your left after entering is the seating bank where you will be seated for the performance. It looks something like this, though the lighting may be a little darker when you enter. Seats are not allocated, you can go and pick any seat you like. If you have an access requirement for a particular seat La Mama

is happy to ensure it remains reserved for you. Please contact the team via info@lamama.com.au or (03) 9347 6948 to arrange this.



The stage will have a microphone stand, microphone and projector screen. It will be quite minimal and you are welcome to walk throughout the performance space before and after the show. To the side of the seating bank, there is room for you to pace.

Seating Bank Risers: are 360mm with a 190mm step between.

Door Frame: 86cm wide

Theatre Seat: Width 490mm; Depth 530mm; Seat height 460mm

The Performer

I watched Someone Die on TikTok is a solo work.
The singular performer's name is Charlotte Otton.



Charlotte's Headshot

Charlotte is the performer and writer of this piece. The show is an energetic hour full of sketches, visual content, and songs. It's a mix of comedy, confronting topics and heart-felt moments.

The show was born out of Charlotte struggling with the grim content she was consuming online and how that affected her.

Charlotte's Costume

Charlotte will be wearing black pants, black boots and a graphic t-shirt. She will also wear a suit jacket for part of the performance.



Content Advice & Feedback

Technical Advice	Technical effect Description
<ul style="list-style-type: none"> - Sudden and sustained loud noises - There are three songs within the piece - A microphone will be used at times 	<ul style="list-style-type: none"> - Charlotte moves between using a microphone and not. - The show also contains video content and a repetition of 'TikTok dings'. The overall sound will be decreased for the Relaxed Performance.
Verbal Content Advice	Verbal content Description
<ul style="list-style-type: none"> - Moderate course language occurs throughout the 60 minutes - Infrequent/low pressure audience interaction 	<ul style="list-style-type: none"> - Between the visual content, Charlotte speaks to the audience and occasionally will swear. - Throughout the show Charlotte will address the audience and sometimes call for a response. Audience interaction is never pressured and there is no expectation of response or participation.
Visual Content Advice	Visual Content Description
<ul style="list-style-type: none"> - Bright visuals - Short and fast paced video content 	<ul style="list-style-type: none"> - The screen projector does not turn off, there is a constant presence of screen, light and visuals. Oftentimes the visuals are short and fast paced.
Content Warnings	Content Warning Description
<ul style="list-style-type: none"> - Violence, Drug References, Sexual References, Death, War, Mental Health, Distressing Audio and Visuals, Loud and Abrupt Audio and Visuals, and Mention of suicide. 	<ul style="list-style-type: none"> - There will be TikToks and videos throughout the show that touch on these content warnings. The show does not dwell on them or make light of them at all but they do appear.

If you would like to give any feedback to the team please contact:

Amber Kitney / amberkitney@gmail.com / 0419 349 831

Or

Charlotte Otton / charlotteottonartist@gmail.com / 0403 298 048