

# Cover Page

Show Name: Hit n Hope: A Character Cabaret

Date and Time: 14<sup>th</sup> – 20<sup>th</sup> October 2024 10:00PM

Low-Sensory Session:

17<sup>th</sup> October 2024 10:00PM

Duration: 60mins

+ Introduction

Approx 2 Minutes

Location: Cabaret Stage (upstairs)

The Motley Bauhaus

118 Elgin St

Carlton VIC

# Content Page

Here is everything in the guide, and why it's included

- [Page 1] Title Page
  - o Show name
  - o Dates and Time
  - o Duration
  - o Location
- [Page 2] Contents Page
- [Page 3-4] What to expect from this low sensory performance
- [Page 5-6] The Performers
  - o Nicola Pohl
  - o Tessa Luminati
  - o Stephanie Beza
- [Page 7] Content Advice
  - o Technical
  - o Verbal
  - o Visual
- [Page 8] Feedback
  - o Contact details
- [Page 9-20] The Motley Bauhaus Access Document
  - o Wheelchair access
  - o Toilets
  - o Steps
  - o Getting there: Parking, Public Transport options
  - o Contact Details
  - o Photos of venue

# What to Expect

For this specific presentation, you can expect the following features to be available:





| <b>Feature</b>  | <b>What this Entails</b>  | <b>Included</b> | <b>Additional Comments</b>   |
|---|---|-----------------|--|
| Consultation with a member of the neurodivergent arts community | <p>A member of the arts community who identifies as neurodivergent has been consulted to assess the work and provide feedback on any necessary changes for it to be considered a Low Sensory experience.</p> <p>This person must have experience in low sensory performance practice; they may be internal or external to the team.</p> | Y               |  |
| Low sensory translation of the performance lighting             | The lighting for the show is augmented to be a low sensory version of a standard showing.   | Y               | Flashing coloured lights to be softened to changing coloured lights with no flashing or strobe |
| Low sensory translation of the performance Sound                | The sound for the show is augmented to be a low sensory version of a standard showing.  | Y               | Headset Microphones not in use, audio levels lowered to balance with the actors' voices.       |
| Addition of the house lights at a low level                     | <p>The house lights are left on at an "airplane at night-time" level.</p> <p>The exact level should be agreed upon by the creative team and consultant.</p>   | Y               | Including lights at bar, and wall lights at back of space.                                     |
| Open door policy  | No lock out, people can come and go as they please.   | Y               | Entrance/exit through the sliding glass door   |
| Walkaround policy   | People can rock, stim, hum, pace, change seats, and come/go as they need/please.  | Y               |  |

# What to Expect

*Continued*

| <b>Feature</b>  | <b>What this Entails</b>   | <b>Included</b> | <b>Additional Comments</b>  |
|---|--|-----------------|---|
| Open phone policy   | Audience can use support devices during the performance.<br>Recording is discouraged.  | Y               |   |
| Event facilitation by a member of the neurodivergent arts community | The performance day in question is overseen by an arts professional with lived experience of, and connection with, the neurodivergent community.<br><br>They will oversee the process, giving FOH staff a briefing, introducing the show to the audience, and being on hand to assist with any incidents related to sensory overwhelm. | Y               | Consultant TBA  |
| Confirmed available Quiet Room                                      | A quiet room is available for patrons to use at their discretion.<br><br>This room shall be set up in line with advice from a neurodivergent consultant.   | N               | No available quiet room at The Motley, it does get loud if the venue is busy, especially in the downstairs bar. There are couches in The Gallery (outside the Cabaret Stage upstairs) that are subject to availability on the night (free to use if not booked, but sometimes there is an event on) |
| Extra FOH staff for the event day                                   | 1-2 extra staff should be included to help deliver this specific performance.<br><br>Staff who have training and/or experience with neurodiversity preferred.  | N               |   |
| Capped tickets  | 75-85% of total seats available, to be agreed upon between the consultant and the creative team.   | Y               | Ticket sales capped at 76 pax   |

# The Performers

| Actor Name + Headshot  | Character + Costume Shot  |
|--|---|
| <p data-bbox="203 405 365 436">Nicola Pohl</p>  <p>A headshot of Nicola Pohl, a young woman with short, dark, wavy hair and bangs. She is wearing a silver, sequined, spaghetti-strap top and a thin necklace. The background is a solid pink color.</p>                                 | <p data-bbox="824 405 1091 436">Various Characters</p>  <p>A collage of four photographs showing Nicola Pohl in different costumes and settings. Top-left: She is in a black, sequined, short-sleeved dress, posing with her arms raised. Top-right: She is wearing a silver, sequined dress and a crown made of thin, radiating sticks, holding a yellow ukulele. Bottom-left: She is wearing a light blue long-sleeved shirt and grey pants, posing with one leg raised. Bottom-right: She is wearing a white sheet as a ghost costume, with a single eye visible through a hole.</p>                            |
| <p data-bbox="203 1134 414 1165">Tessa Luminati</p>  <p>A headshot of Tessa Luminati, a young woman with long, straight red hair. She is wearing a silver, sequined, spaghetti-strap dress and holding a blue baseball bat over her shoulder. The background is a solid pink color.</p> | <p data-bbox="824 1134 1101 1165">Various Characters:</p>  <p>A collage of four photographs showing Tessa Luminati in different costumes and settings. Top-left: She is wearing a silver, sequined, spaghetti-strap dress and has a large, rectangular, textured object on her head. Top-right: She is wearing a light green long-sleeved shirt and dark pants, posing with her arms outstretched. Bottom-left: She is wearing a silver, sequined, spaghetti-strap dress and holding a small object. Bottom-right: She is wearing a white sheet as a ghost costume, with a single eye visible through a hole.</p> |

Stephanie Beza



Various Characters:



# Content Advice

|   |  |
|---|--|
| Technical Advice  | Technical effect Description   |
| <ol style="list-style-type: none"> <li>1. Lighting Changing colours</li> <li>2. Musical backing tracks</li> </ol>   | <ol style="list-style-type: none"> <li>1. Lights are different colours for each sketch, some change colours quickly but are not strobe.</li> <li>2. There are five (5) backing tracks used across the show, one at the start, two in the middle and two near the end. Tracks are both sung/spoken over and used as backings for dance routines.</li> </ol>   |
| Verbal Content Advice   | Verbal content Description   |
| <ol style="list-style-type: none"> <li>1. Yelling</li> <li>2. Swearing</li> <li>3. Fast-paced talking</li> </ol>  | <ol style="list-style-type: none"> <li>1. This is used for comedic effect, loud vocal sounds coming from performers</li> </ol>   |
| Visual Content Advice   | Visual Content Description   |
| <ol style="list-style-type: none"> <li>1. Actors portraying characters</li> <li>2. Low pressure audience participation</li> <li>3. Depiction of misogyny, simulated drug use, sexual themes.</li> </ol> | <ol style="list-style-type: none"> <li>1. Different characters are marked by different voices and physicality used. There will also be costume changes as represented in photos on pages 5 and 6.</li> <li>2. Audience participation is by consent only. If you do not wish to be interacted with, shake your head and the performers will stop talking to you and move on.</li> <li>3. Content will happen throughout the show</li> </ol> |

# Feedback

- Contact details for best person to give feedback to  
Nicola Pohl (she/they)  
npohl48@live.com



# THE MOTLEY BAUHAUS ACCESS DOCUMENT

## Access info

Downstairs at the Motley Bauhaus is fully accessible. There are no steps throughout the downstairs areas, all passageways are at least 100cm wide, including access to the downstairs theatre. The downstairs areas include the blackbox theatre, the reception/bar area, recording studio and toilets.

Upstairs at the Motley Bauhaus is not an accessible area. There is a flight of stairs in order to access the upstairs area. There is no elevator. Once upstairs there are two steps in the gallery area. The doorways to access the toilet area are only 80cm wide. The upstairs area includes the Cabaret Stage/event space, the gallery, more toilets, and art studios.

## Wheelchair access

The downstairs area at The Motley Bauhaus is wheelchair accessible. The second story currently is not.

There are no steps downstairs and all passageways are at least 100cm wide.

There are double doors at the front entrance which you may require help opening. If you are attending alone and are having trouble opening the doors then you can get the attention of the front of house staff through the glass frontage and they can come and help you open the door.

If you are attending a theatre show in a wheelchair you are not required to notify the venue in advance but it is a good idea so that we can prepare in advance by reserving a space for you.

## Toilets

All toilets in the venue are unisex. The downstairs toilets are located in the rear right hand side of the venue accessed via a passageway next to the blackbox theatre. There is signage leading the way.

The first toilet you come to on your right is the access toilet.

If you continue down the corridor you will find 2 toilet stalls to your right, followed by two wash basins. If you keep walking you will find a urinal to your left and another toilet stall to your right.

The toilets upstairs are located on the far end of the gallery through a black door. Inside that corridor you will find two doors, each of those doors contain a bathroom with a washbasin and 2 toilet stalls. The furthest door also contains a urinal.

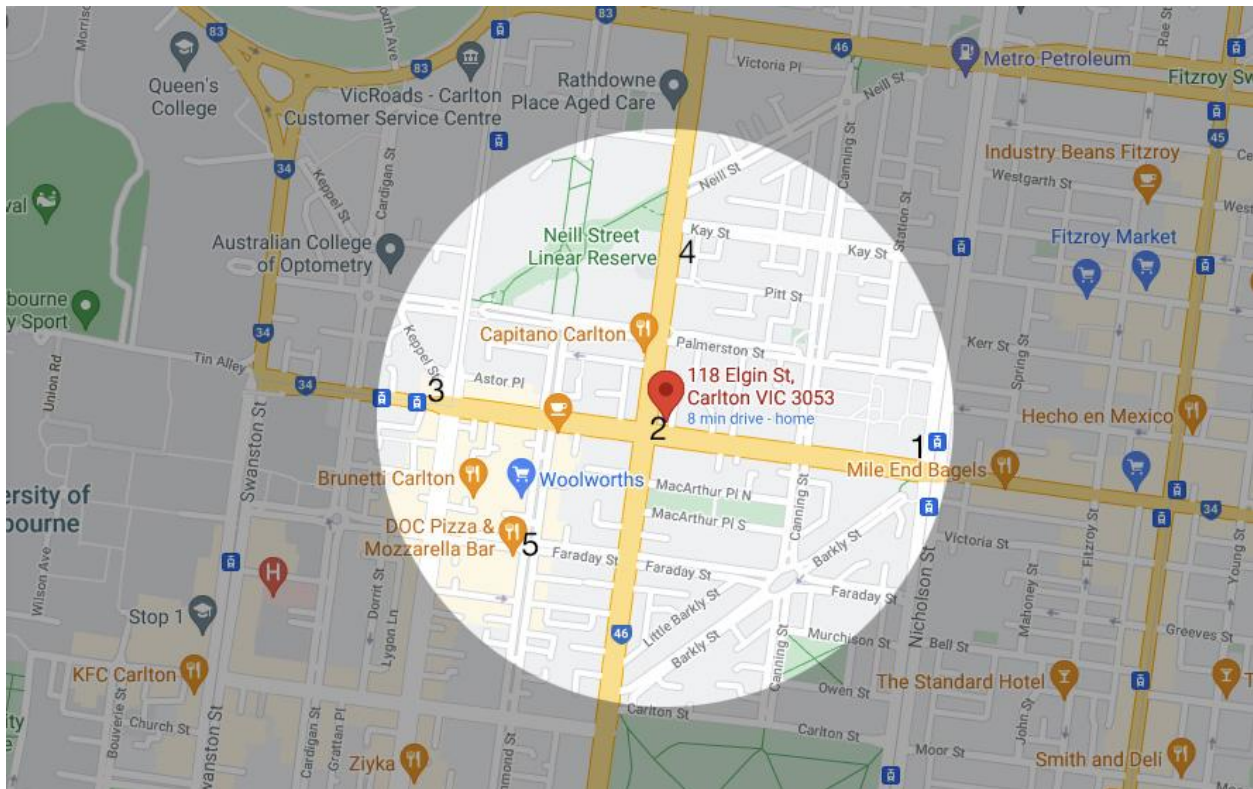
## Steps

There are no steps in any area of the venue downstairs, and no steps to access the venue from the street.

There is one flight of stairs to access the upstairs areas. There are 12 steps to arrive at a landing, then a further 12 to reach the upstairs area.

Once upstairs there are two steps dividing the gallery space.

## Public transport



1. 96 tram route
2. 26, 200 and 207 bus routes
3. 1 and 6 tram route
4. 250 and 252 bus route
5. 955 and 956 bus route

There are 7 bus routes and 3 tram routes within a 400m walk of the venue. There are also two major train stations within 1km from the venue and vastly more tram and bus options outside of the 400m radius but still close enough to utilise.

### Bus

26, 200, 207 within 20m

250, 251 within 55m

955,966 (night buses) within 347m

### Tram

1, 6 within 324m

96 within 366m

## Train

The nearest train stations are:

Melbourne Central and Parliament (both 1km)

## Parking

There are no dedicated parking bays at The Motley Bauhaus, only street parking. There are timed car parks (mostly 1 hour) along Elgin Street directly out the front of the venue.

For quick drop offs and loading and unloading there is an alleyway alongside the venue called Cassamento Place. You can briefly stop here if there are no parking spots directly out the front. Please note you cannot leave your vehicle there, it is for drop offs and loading only. It is big enough to accommodate up to a 3 tonne truck.

There are more timed car parks around the corner in Rathdowne Street. Most of these are timed 2 hour spots. There is also a loading bay around the corner from the venue in Rathdowne Street.

There are a number of smaller streets that branch off from Rathdowne that have 4 hour car parks.

## Contact details

118 Elgin Street, Carlton 3053

[info@themotley.com.au](mailto:info@themotley.com.au)

044 9916 853



Picture of the front door of the Motley Bauhaus. It is a double door made of wood that opens from the centre. The door has glass panels with various posters stuck to the windows, there is also a sign stuck to the front door saying 'welcome to the Motley Bauhaus'. There are two large ornate gold handles, one in the centre of each door. There is also a sign next to each handle that says 'pull'. Below the left handle there is another silver lever handle.



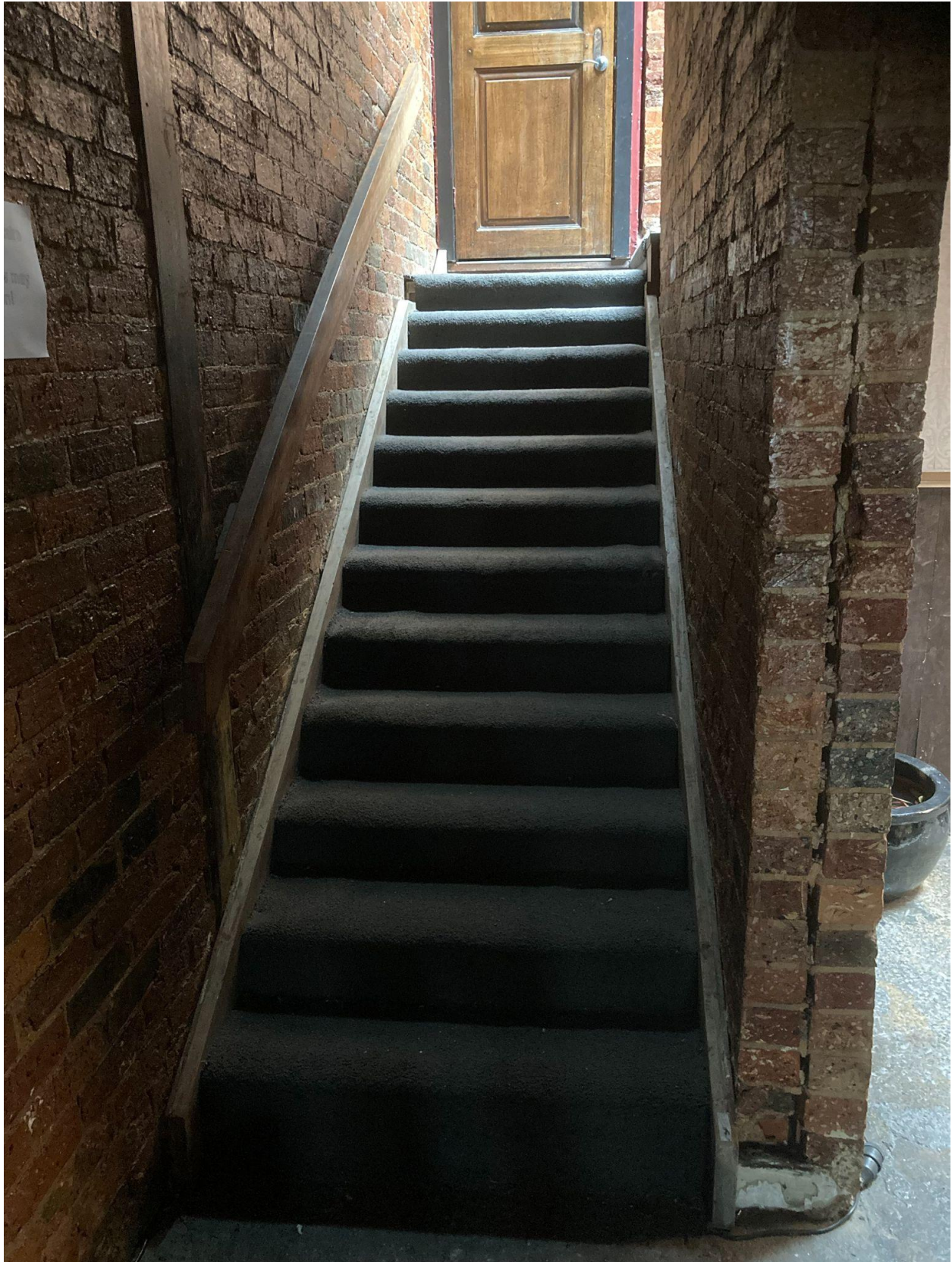
Picture of the interior of the Motley Bauhaus. There is ornate pressed gold tin on the wall to the left and also overhead on the side of a sunken section of the roof. On the left side of the picture there is a wooden door with a metal latch. Extending from there is a thin bar with 6 cream backed swivel chairs lined up along it and 5 visible teal lights sitting on it. The bar is divided in the middle by a wooden pillar. The sunken section of the roof is made of wooden planks. There are 9 visible lights hanging from the roof. On the right hand side of the picture is the corner of the main bar. There is a bottle of hand wash sitting on it. At the rear of the picture you can see a flight of stairs heading upwards and half visible next to that is a black door on a cream wallpapered wall.



Picture of the passageway leading to the downstairs toilets. On the very left side ia a black door with a sign on it saying, 'The Motley Theatre, please do not enter unshered'. The door is aon a wall with cream coloured wallpaper above dark wood paneling. There are 7 show posters on the wall and a sign pointing down the passageway above this. On the right side is a small table partly visible in the frame, then the corner of another wall with wallpaper and wood paneling. There is a fire hose on this wall. The passageway extends into the picture and then bends to the left. There is a sign at the end pointing to the left hanging on the wooden door.



Picture of the Motley Bauhaus Toilets. There is a passageway on the left leading down into several colourful rooms. To the right of this is a white sliding door that opens into a tiled room that is the access toilet at The motley Bauhaus.



Picture of the set of stairs leading from the ground floor of the Motley Bauhaus up to a landing. There are 12 carpeted stairs leading up to a landing that has a wooden door on the other side of it. The landing continues around to the right. Both walls on either side of the stairs are made of brick. On the right side of the right wall of the stairs you can see the wall to the theatre pictured in previous photos with dark wooden paneling below cream coloured wallpaper. You can also see a large pot sitting on the ground.





Picture taken from the top of another set of stairs. These stairs continue on from the previous. They also have a brick wall on the left side and are carpeted. There are 11 stairs. On the right side is a wooden wall that ends about hip height and creates a wooden edge running up alongside the stairs. On the other side of this short wall is a small garden with green astroturf. On the end wall above the landing is some wood paneling below more pressed gold tin.



Picture of the upstairs stage/event space at The Motley Bauhaus. On the left hand side is a white tiled bar with some plants sitting on the far end and beer taps visible on the left side closest to the frame. Behind that are some illuminated spirit bottles against the back wall of the bar. On the right side are black chairs lined up in 5 on rows of 3 facing the end stage. Beyond this are square tables and chairs sitting in front of a short stage with a grey wall behind it and curtains framing the stage. Above is a wooden roof with 5 visible lights hanging from it.



Picture of the gallery at The Motley Bauhaus. It is a wide open space with natural lighting. The floor is a light wood and it has a white wall visible at the back. There are various artworks hanging on that wall. On the left side there is a wooden wall about hip height that sections off what looks like an area with plants in it. Beyond this there is another door visible with an exit sign above it. There are two wooden pillars visible, one in the middle of the room and another in front of the short wooden wall on the left side of the picture. Just beyond this there are two black wooden steps stretching across the gallery floor.