

# Relaxed Guide - Cover Page

Show Name: Emilie Biggar & Jeremy Moses: Hear/See No Evil

Date of Shows: Relaxed/Sensory Friendly matinee:  
5/10/24 - Doors: 3PM, Show: 3:30PM

Duration: 45 MINUTES  
+ Introduction  
5 Minutes

Location: Corner Store  
Festival Hub: Trades Hall  
Cnr Lygon & Victoria Sts  
Carlton.

# Content Page

Here is everything in the guide, and why it's included

- [1] Relaxed Guide Cover Page
- [2] Contents Page
- [3] Access Pack Introduction
- [4, 5] What to expect from this low sensory performance
- [6, 7] Getting to the Venue
  - o Getting to Trades Hall
  - o Public Transport
  - o Parking
  - o Rideshare
  - o Contact Details
  - o Accessibility at Corner Store
- [8-17] Getting around the Venue
  - o Outside of Trades Hall
  - o Front of Trades Hall
  - o Inside Trades Hall
- [18] The Stage, Corner Store Diagram
- [19] The Performers
- [20] Content Advice
- [21]
  - o Important show information
  - o Show Breakdown (SPOILERS)
  - o Feedback

EMILIE  
BIGGAR

JEREMY  
MOSES

# HEAR/SEE NO EVIL

## ACCESS PACK

Dear audience,

Welcome to the **ACCESS PACK** for “**EMILIE BIGGAR & JEREMY MOSES: HEAR/SEE NO EVIL**” - October 2-6 at Festival Hub: Trades Hall, Carlton, as part of the 2024 Melbourne Fringe Festival.

Our show aims to be as accessible and inclusive as possible, and a safe space for you to enjoy the show. This Pack will outline our venue’s accessibility, provide content warnings and break down the show.

FOR MORE SHOW INFORMATION, please see our show page on the Fringe website:  
<https://melbournefringe.com.au/event/emilie-biggar-jeremy-moses-hear-see-no-evil/>

Please email any additional accessibility requirements to:  
[emandjemcomedy@gmail.com](mailto:emandjemcomedy@gmail.com)

We hope you enjoy the show!

- Emilie Biggar & Jeremy Moses, Writers/Performers.

# What to Expect

For this specific presentation, you can expect the following features to be available:

<b>Feature</b>	<b>What this Entails</b>	<b>Included</b>	<b>Additional Comments</b>
Consultation with a member of the neurodivergent arts community	<p>A member of the arts community who identifies as neurodivergent has been consulted to assess the work and provide feedback on any necessary changes for it to be considered a Low Sensory experience.</p> <p>This person must have experience in low sensory performance practice; they may be internal or external to the team.</p>	Yes	
Low sensory translation of the performance lighting	<p>The lighting for the show is augmented to be a low sensory version of a standard showing.</p> <p>It is encouraged that the original experience of the show is preserved through these changes.</p>	Yes	
Low sensory translation of the performance Sound	<p>The sound for the show is augmented to be a low sensory version of a standard showing.</p> <p>It is encouraged that the original experience of the show is preserved through these changes.</p>	Yes	
Addition of the house lights at a low level	<p>The house lights are left on at an “airplane at night-time” level.</p> <p>The exact level should be agreed upon by the creative team and consultant.</p>	Yes	
Open door policy	No lock out, people can come and go as they please.	Yes	
Walkaround policy	People can rock, stim, hum, pace, change seats, and come/go as they need/please.	Yes	
Open phone policy	<p>Audience can use support devices during the performance.</p> <p>Recording is discouraged.</p>	Yes	

<p>Event facilitation by a member of the neurodivergent arts community</p>	<p>The performance day in question is overseen by an arts professional with lived experience of, and connection with, the neurodivergent community.</p> <p>They will oversee the process, giving FOH staff a briefing, introducing the show to the audience, and being on hand to assist with any incidents related to sensory overwhelm.</p>	<p>Yes</p>	
<p>Confirmed available Quiet Room</p>	<p>A quiet room is available for patrons to use at their discretion.</p> <p>This room shall be set up in line with advice from a neurodivergent consultant.</p>	<p>Yes</p>	
<p>Extra FOH staff for the event day</p>	<p>1-2 extra staff should be included to help deliver this specific performance.</p> <p>Staff who have training and/or experience with neurodiversity preferred.</p>	<p>Yes</p>	
<p>Capped tickets</p>	<p>75-85% of total seats available, to be agreed upon between the consultant and the creative team.</p>	<p>Yes</p>	

# How to get there

## Getting to Trades Hall

Trades Hall is located on the corner of Lygon Street and Victoria Street, Carlton.

The main entrance is via Lygon Street.

You can view a Google Map Link [here](#)

You can view a Melbourne CBD mobility map [here](#)

## Public Transport

There are a range of public transport options around the Victorian Trades Hall building.

You can plan your journey using the [Public Transport Victoria website](#).

Situated on Lygon St, the Festival Hub is just a short journey westward from the Swanston St corridor with the number 1, 3/3a, 5, 6, 16, 64, 67, and 72 trams. The closest stop is the RMIT University/Swanston St stop, or the Queensberry St/Swanston St stop. Both stops are level-access stops.

Please note, routes 1, 3/3a, 64, and 67 are not serviced by low-floor trams. Routes 5, 6, 16, and 72 are partially serviced by low-floor trams.

The Russell St/Lonsdale St tram stop which services the 30 and 35 trams is a short journey from the south.

This stop is not a level-access stop.

The Melbourne Museum/Nicholson St stop services the 86 and 96 trams. The 86 tram route is partially serviced by low-floor trams. The 96 tram route is entirely serviced by low-floor trams.

There are also a range of buses that run along Lygon St (200 and 207), and Rathdowne St (250, 251, and 402) and plenty more in the CBD or towards Grattan Street.

If travelling by train, the Festival Hub is only a short journey from Melbourne Central Station.

Exit at Swanston Street/La Trobe Street and make your way East up La Trobe Street.

Turn left at Russell Street, and continue to Victoria Street, when Russell Street becomes Lygon Street.

Cross the road and you will be at Trades Hall.

## Parking

There is no onsite parking at Trades Hall. If you are driving to the venue, there is GreenCo Parking nearby at 43 MacKenzie St, and some kerb side parking in the surrounding areas.

## Ride-share

If travelling by a ride-share service or taxi, you can provide the location of Victorian Trades Hall or 54 Lygon St.

There is space for the driver to pull up in front of the Lygon St Entrance.

### Contact Details

Melbourne Fringe's Office is open between 10am to 6pm Monday to Friday. During the Festival the phone lines are open for extended hours.

**Office phone:** [+61 \(03\) 9660 9600](tel:+61(03)96609600)

TTY users: phone 13 36 77 then ask for 03 9660 9600

Speak and Listen users: phone 1300 555 727 then ask for 03 9660 9600

Internet relay users: connect to the NRS ([internet-relay.nrs.gov.au](http://internet-relay.nrs.gov.au)) then type in 03 9660 9600

**Office Email:** [info@melbournefringe.com.au](mailto:info@melbournefringe.com.au)

### Accessibility at Corner Store

Festival Hub: Trades Hall - Corner Store is wheelchair accessible. The entrance to the venue is on Lygon St. You can head up the front stairs and through the main doors, from there head right to get to the Loading Dock. If you need step free access, there is lift at the front of the building and our team will be able to guide you from there to the Loading Dock. Once you're in the Loading Dock you can head straight through to the Victoria Street Building where the Corner Store is on your right.

# The Venue

Trades Hall

Outside of Trades Hall



## Image Description

Trades Hall viewed from across the road. A large beige building, with a pointed triangle roof and two turret features either side. Construction scaffolding is two thirds up on the left turret. A tree obscures the right turret. On the roof are three flags – the Aboriginal flag, the Torres Strait islander flag and a red flag which is a symbol of the international Labor movement. The building has eight pillars in the centre – representing the eight-hour day. There are long thin rectangle windows up high, and arch windows either side of a large arch doorway with a dark green door below the rectangle windows. Several cars are parked on the street on front of the building.

Trades Hall is a large nineteenth century building on the corner of Lygon St and Victoria St. You will enter from Lygon St. The Lygon St entrance has large pillars and eight steps leading to the portico.

There is also an external mobility lift on the southern end of the portico, or the right-hand side if you are facing the building.

## Front of Trades Hall





### **Image Description**

Close up of part of the Lygon Street frontage of Trades Hall. Arch windows are set into beige exterior walls. There are 5 beige pillars that are set into the concrete steps. Next to the pillars is a grassy area with an iron fence. The footpath is grey concrete.

This is the portico, or Lygon St entrance, to Trades Hall. During the Melbourne Fringe Festival, this area will be lit up with coloured lights and there will be several different signs on the pillars and surrounding areas.

There will also be a team of Melbourne Fringe volunteers at this location to welcome you to the venue. They will be wearing purple shirts that say “VOLUNTEER” on the back, and “MELBOURNE FRINGE” on the front. Some of these volunteers are specifically trained in access and inclusion.



### **Image Description**

An external mobility lift. A metal cubed lift sits between two beige pillars. The lift’s metal is slightly transparent. The front door section is low, and the back section is double the height of the front.

This is the South Portico Door to Trades Hall. During the Festival there are a team of volunteers stationed here to assist you.

This door is the step-free way to enter the Trades Hall building.

At the front of the Lygon St entrance there is an external mobility lift. Operation instructions for the mobility lift can be found on the access page of the Melbourne Fringe website and at the end of this document.

During the Festival there are a team of volunteers stationed at this lift to assist patrons in using it and directing patrons to where they need to go.

## Inside Trades Hall



### Image Description

The interior of Trades Hall. To the right is an ascending staircase, with a wooden rail on the wall. To the left is a corridor which turns right. A dark door is at the end of the corridor. The top two thirds of the walls are beige, with a green feature between the wooden skirting board and frieze. A floral-patterned frieze curves around the wall and runs along it. The floor is dark green. Lights hang from the ceiling.

Once you enter through the South Portico Door, you are inside the “Lygon St Building”. There is a corridor (pictured) that will lead you to the Loading Dock Bar, the accessible bathroom, and the internal lift.

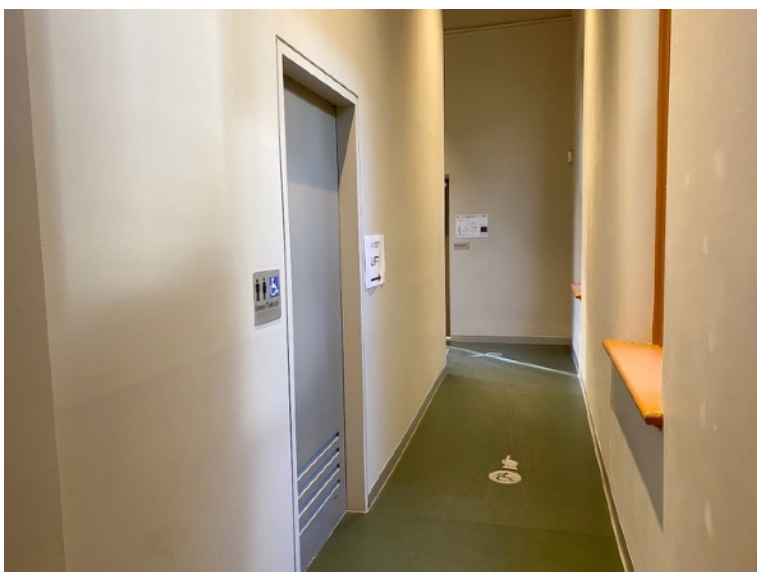
During the Festival this space is more dimly lit with coloured lighting. It can be quite crowded in this corridor at times.



### **Image Description**

The corridor facing the viewer has a closed brown door with glass windows, and a number 2 in the centre. Next to the door is a small stretch of wall. The top two thirds of the wall is beige, with a dark green feature between the wooden skirting board and a frieze. A floral-patterned frieze runs horizontally along the centre of the wall between the beige and green. The floor is green. The wall is broken up by rectangular archway leading to an adjacent corridor.

This is a continuation of the same corridor. The doorway that has light spilling through it will lead you to the Loading Dock Bar, accessible bathroom, and internal lift.



### **Image Description**

The corridor is a beige colour with some paint marks and scuffs on the walls. The floor is green vinyl, and there is a small silver decal on the ground with a symbol of a person using a wheelchair on it, and a hand pointing further down the corridor.

On the left wall of the corridor there is a doorway that leads to the ground-floor accessible bathroom.

There are some signs on the walls, including emergency evacuation procedures, directional signage to the lift, and a sign indicating the bathroom.

This is a continuation of the same corridor. On the left is the ground floor accessible bathroom. Further along is the internal lift, and the doorway that leads you to the Loading Dock. This corridor is somewhat darker during the Festival, lit with coloured lighting.

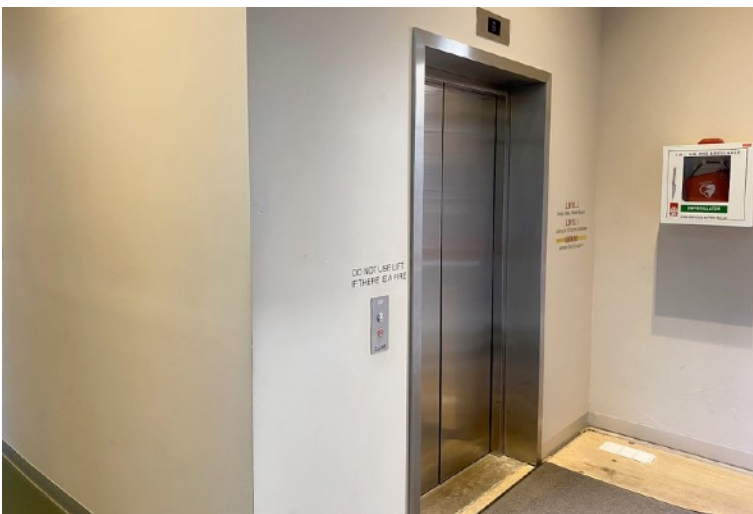


### **Image Description**

The bathroom is a beige colour and is well lit from ceiling lights.

There is a basin on the left, with a counter on the right-hand side. There is a bin in the left corner. In the right corner is a toilet with a railing on either side of the cistern. On the left side of the toilet is a sanitary bin.

This is the accessible bathroom on the ground floor.



### **Image Description**

A photo of the internal lift. On the left side of the image is a corridor that led from the South Portico Door. In the centre of the image is the lift. There are buttons on the left of the lift and a light at the top. In front of the lift, on the ground is a carpeted area above some wooden floor surface.

On the right side of the lift is a defibrillator.

This is the internal lift at the end of this corridor. It will take you from the ground floor to level one or level two. The ground floor is where four venues in the Festival Hub are located. The ground floor is also where the Loading Dock Bar is located, along with the

box office, more bathrooms, the sensory friendly quiet space, and the courtyard. The first floor is where eight more venues in the Festival Hub are located on the first floor as well as a smaller bar and many more bathrooms (including more accessible bathrooms).



### **Image Description**

An image of the courtyard door. On the floor is a carpeted area sitting on top of a wooden floor. On the wall to the left of the image is a defibrillator. To the right of the defibrillator is a narrow and tall window. On the wall on the right side of the image is a double door with a window panel in each door.

On the right side of the door is an evacuation map.

This is the door that leads from the South Portico Door through to the courtyard and Loading Dock Bar, and all other ground floor facilities.

This corridor is dimly lit during the Festival, with coloured lighting.



### **Image Description**

A photo of a doorway that leads to a dimly lit concrete area. On the left side of the doorway is a fire hose reel. On the right side of the doorway is a powerpoint and a coffee table beneath it, against the wall.

Through the doorway you can see some concrete pillars and another doorway that leads to the Victoria St building.

This is the entrance into the Loading Dock, after you exit the South Portico corridor. The Loading Dock is where the bar, food service, box office, seating, bathrooms, and other facilities are located. It's a great place to head to prior to seeing your show, and there are staff and volunteers in purple t-shirts in this area who can assist you in finding where you need to go.

The Loading Dock Bar looks vastly different during the Festival. There are coloured lights, colourful carpets, posters on the walls, decorations and music playing. It can be quite crowded in the Loading Dock during the Festival.



### **Image Description**

The inside of a lift. There is green protective fabric on the walls. The wall of buttons to choose a level is partially in view.

This is the inside of the internal lift. It may look different during the Festival.



### **Image Description**

The outside of an internal lift. It has silver doors. A silver button is on the left side. The walls around the lift are greyish and the floor is green. Text above the button to call the lift reads 'Do not use lift if there is a fire.'

Accessible toilets at Common Rooms  
This is where you will be once you've exited the lift onto the first floor. If you head down the corridor on the left side of the image you will arrive at Common Rooms and the ETU Ballroom. If you head in the other direction you will arrive at Solidarity Hall, The Temple, Music Room, the can bar and thoroughfares to other venues.



### **Image Description**

An internal corridor with greyish walls, green floors and doorways on the left. One doorway is the entrance to an accessible toilet – a silver and blue sign with a wheelchair symbol is on the wall, indicating its purpose. The next doorway is partially in view – it's open, and part of a yellow wet floor sign is resting on the inside edge of the doorway. At the end of the corridor are some double doors, that are open, and through the doors is further green floor and open space.

This corridor leads away from Common Rooms and ETU Ballroom, and towards the other venues on level one. It will be more dimly lit during the Festival with posters lining the walls. On the left wall is the door to the level one accessible bathroom.





### **Image Description**

The inside of the accessible toilet. A toilet with a grey seat and white backrest is in the right corner of the room. Silver metal railings are along the wall parallel to the toilet, and adjacent to the toilet cistern. Below the railing adjacent to the cistern is a blue sanitary bin. A roll of toilet paper is on the wall next to the toilet, and a spare roll sits on the railing. The floor has dark grey tiles. A drain is on the floor. The walls are greyish.

This is the level one accessible bathroom, taken inside the bathroom.

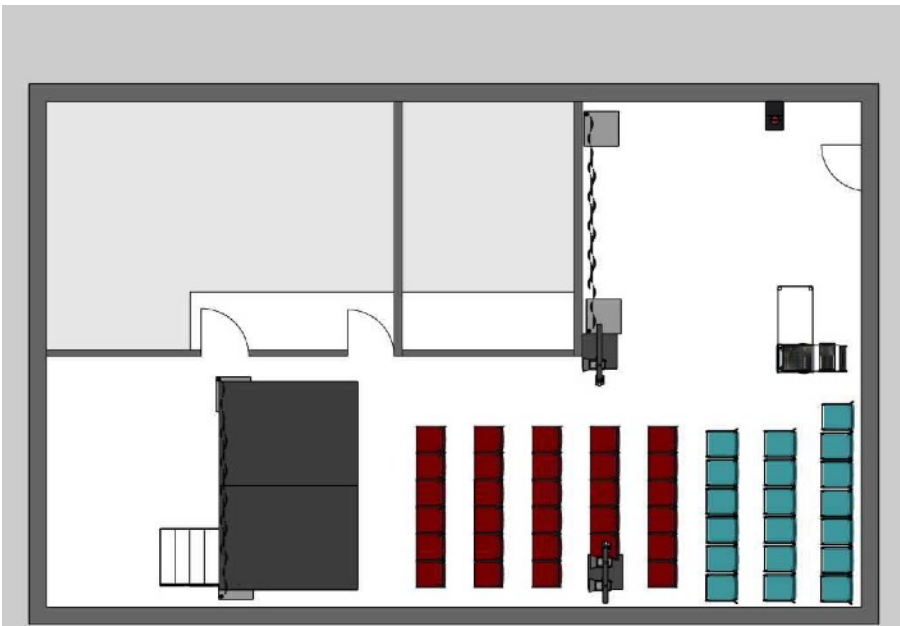
# The Stage

## Corner Store



### Image Description

5 rows of seats line the ground in front of a stage that spans the width of the room. The stage is about 60cm high. There is a microphone on the stage, and a single spotlight lighting it. The room also has two large windows on the left wall, with horizontal brown blinds. There is a lighting pole next to the windows.



# The Performers



<b>Actor Name</b>	<b>Character</b>
Emilie Biggar	Emilie Biggar
Jeremy Moses	Jeremy Moses

# Content Advice

-Event Accessibility	-Blind or Low Vision Rating: Partially Accessible -Deaf or Hard of Hearing Rating: Partially Accessible, English no barrier
Age suitability	PG
-Mild Coarse Language, Some Infrequent/ Low Pressure Audience Interaction.	-Scene 7: Emilie goes into the audience offering refreshments. She will interact with consenting audience members. This will be reduced in the Relaxed/Sensory Friendly session.
Content warnings: Staged Violence	- Scene 6: Jeremy holds a prop crossbow and discusses performing circus stunts with Emilie. The scene ends with a blackout where audiences hear an arrow being fired. When the lights return on, Jeremy has a costume arrow through his head. This is all pretend.

## **IMPORTANT SHOW INFORMATION**

*All sessions will include pre-recorded audio descriptions of visuals by the performers.*

October 2-5, Wed-Sat: show at 8:15pm sharp.

October 5, Saturday Matinee: show at 3:30pm, Doors at 3pm  
*Relaxed/Sensory Friendly Session*

October 6, Sunday: Show at 7:15pm sharp.  
*Auslan interpreted by Kel Benzie.*

## **SHOW BREAKDOWN**

### ***\*\*SPOILER ALERT\*\****

***The following should only be read by audiences that prefer prior knowledge of show content.***

### **COSTUMES:**

- Scene 1-2 - Smart/casual clothes. Jeremy has a gold cane and black sunglasses when entering.
- Scene 3 - Jeremy: Shepherd's robe, holding a herding staff, Emilie: Leopard with plastic mask and tail.
- Scene 4 - Jeremy: Black suit pants, a white button-up shirt and black loafers. Gold bow-tie.
- Scene 5-6 - Emilie in white button-up shirt and black 3/4 pants. Gold bow-tie Jeremy and Emilie put on flat hats and matching red striped barbershop quartet jackets
- Scene 7 - They take hats and jackets off
- Scene 8 - Matching gold sequins tuxedo with tails jackets.

### **SCENE CONTENTS**

- Scene 1 - Emilie and Jeremy miscommunicate about how to start the show.
- Scene 2 - Solo Emilie talks to the audience about her disability.
- Scene 3 - Jeremy performs a dramatic Shakespeare monologue. Emilie interrupts, misunderstanding the scene. They argue again.
- Scene 4 - Solo Jeremy talks to the audience about his disability.
- Scene 5-6 - After bickering while getting ready, Jeremy tries to make Emilie perform a circus stunt.
- Scene 7 - Emilie interacts with the audience while Jeremy becomes emotional.
- Scene 8 - Emilie and Jeremy finish with a harmonious musical number.

## **Feedback**

- For any feedback or additional access requirements, please email

[emandjemcomedy@gmail.com](mailto:emandjemcomedy@gmail.com)